

TIJUANA, MEXICO

Gen Abelardo L Rodriguez Intl

*ATIS
127.9

*TIJUANA Approach
119.5 120.3

SPEED RESTRICTIONS WITHIN MEXICO AIRSPACE

Maximum IAS unless otherwise depicted or authorized by ATC

At or below 3000' AGL within 10NM of any airport.....	200 KTS
At or below 10,000' MSL within Mexico Airspace.....	250 KTS
At or below 10,000' AGL within 30NM of any airport.....	250 KTS

WITHIN TIJUANA TMA

At or below 3500' MSL of Gen Abelardo L Rodriguez Intl Apt and within 10NM of TIJ VORDME.....	200 KTS
At or below 10,500' MSL within 30NM of TIJ VORDME.....	250 KTS

WITHIN MEXICALI TMA

At or below 3100' MSL of Gen Roldolfo Sanchez Taboada Intl Apt and within 10NM of MXL VORDME.....	200 KTS
At or below 10,100' MSL within 25NM of MXL VORDME.....	250 KTS

MEXICALI TMA (D)

UNCT'L BELOW
1500' 10 NM-25 NM
GND 0 NM-25 NM

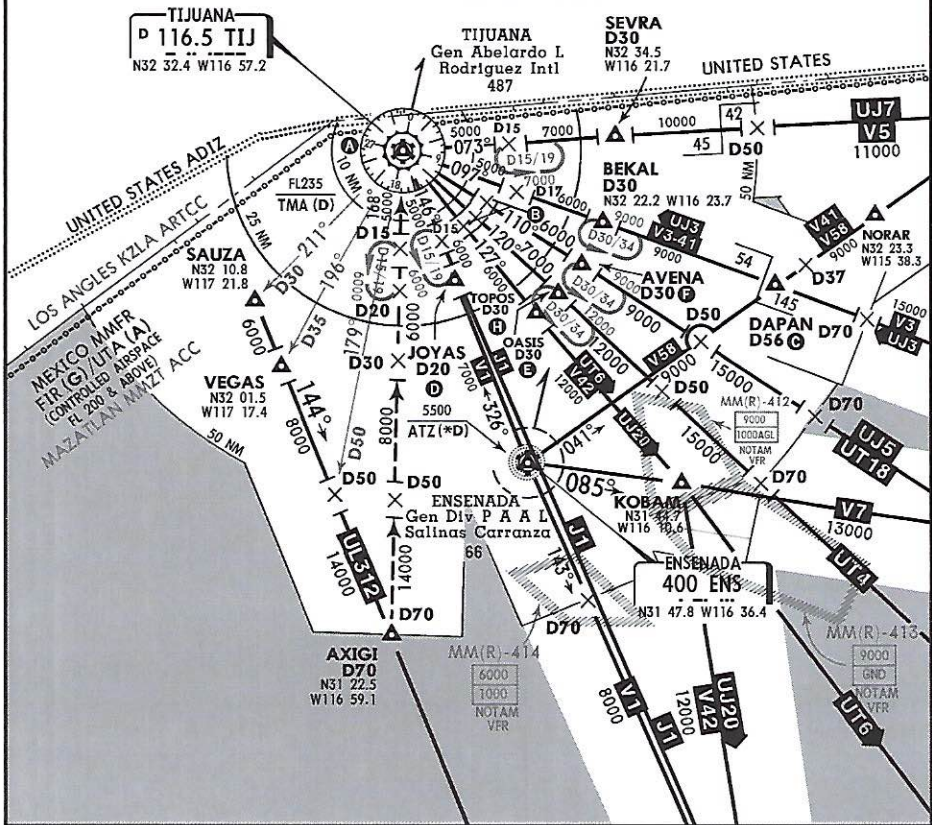
TIJUANA TMA (D)

UNCT'L BELOW
4500' 25 NM-50 NM
2000' 10 NM-25 NM
GND 0 NM-10 NM

A MEA within
14 NM 5000'
E D14

C N32 13.3 W115 55.0
D N32 13.8 W116 48.5
E N32 12.0 W116 31.2
F N32 16.2 W116 27.3
H N32 09.1 W116 34.8

UL and UT routes within
Mexico usable only for
aircraft equipped with RNAV.

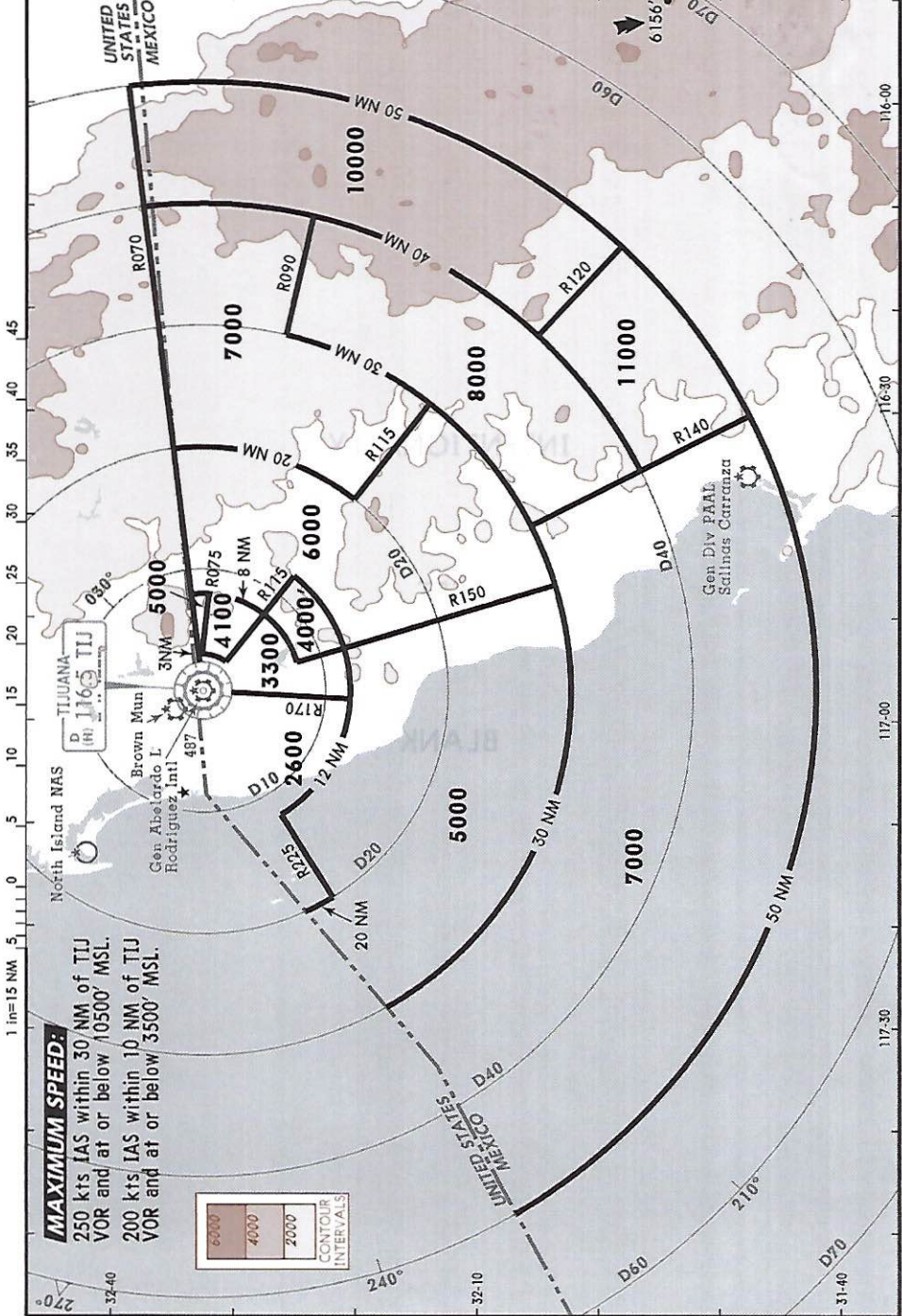


© JEPPESEN 1999 2015 ALL RIGHTS RESERVED

15-1481

*TIJUANA Approach (R)	Apt Elev	Alt Set: MB (IN on req)	Trans level: FL 195	Trans alt: 18500'
119.5 120.3	487'	1. These MVAs are the lowest altitudes that can be assigned by the controller in a sector when RADAR control procedures are applied, without affecting routes and MEAs. 2. All aircraft operating under VFR within the TMA should have transponder mode 3A/C and 4096 code capability.		

15-1483

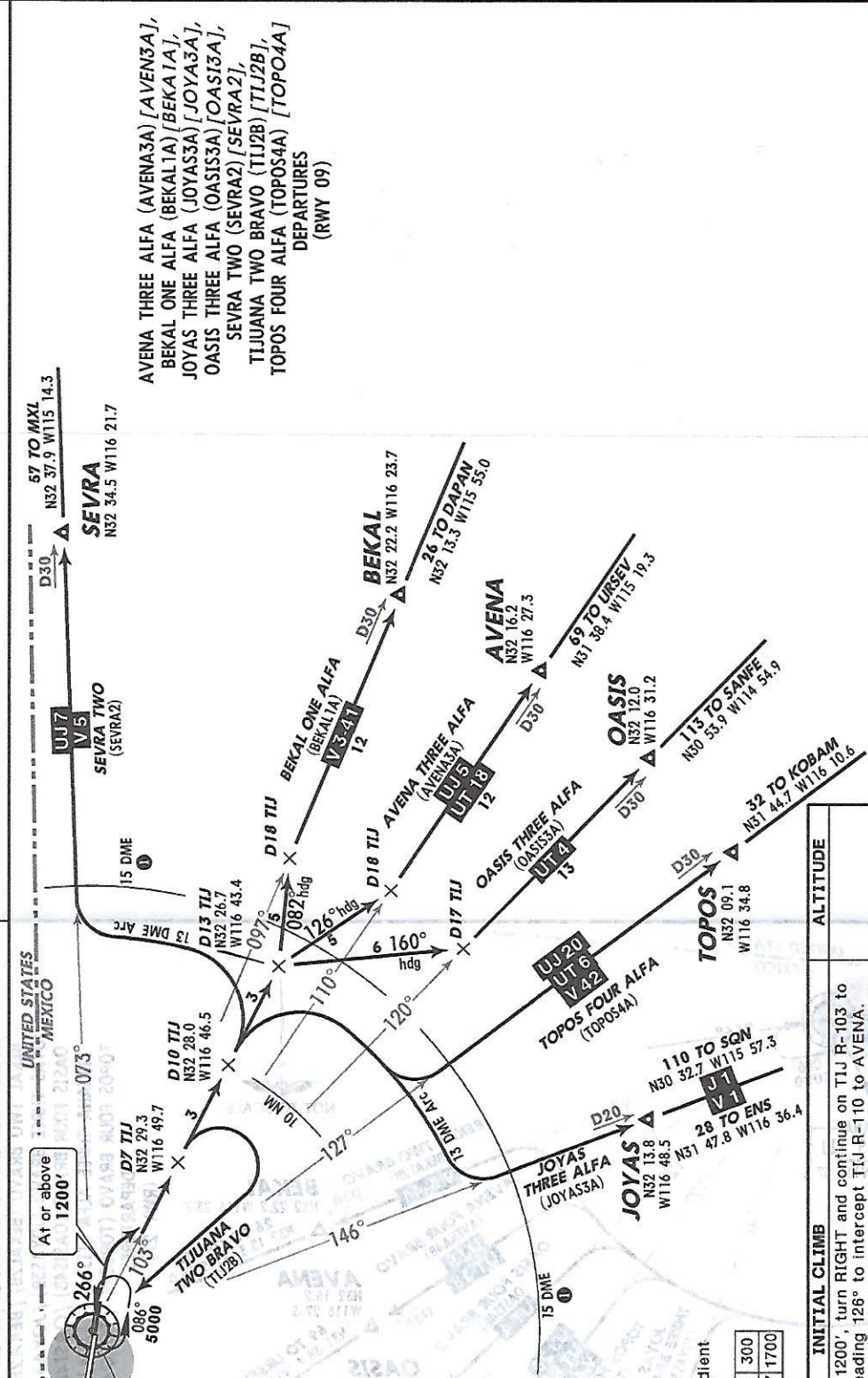


CHANGES: Notes.

© JEPPESEN, 2002, 2010. ALL RIGHTS RESERVED.

1. In case of failure of TIJ VOR/DME and/or radio aids involved in this procedure, EXPECT RADAR vectors.
2. CAUTION: Light, low altitude, uncontrolled, US VFR traffic patrolling NORTH side of the border.

Apt Elev 487'
Trans level: FL195 Trans alt: 18500'
At or above 1200'



AVENA THREE ALFA (AVENA3A) [AVENA3A],
BEKAL ONE ALFA (BEKAL1A) [BEKA1/A],
JOYAS THREE ALFA (JOYAS3A) [JOYA3A],
OASIS THREE ALFA (OASIS3A) [OASIS3A],
SEVRA TWO (SEVRA2) [SEVRA2],
TIJUANA TWO BRAVO (TIJ2B) [TIJ2B],
TOPOS FOUR ALFA (TOPOS4A) [TOPO4A]
DEPARTURES
(RWY 09)



MINIMUM CROSSING ALTITUDE	6000	5000	4000	3700
MXL	6000			
MLL	6000			
PPE	6000			
V-3	6000			
HMO	5000			
LMM	5000			
SRL	5000			
ENS	4000			
SQN	4000			
V-42	4000			
V-1	4000			
MZB	3700			

These SIDs require a minimum climb gradient of 340' per NM until 6000'.

Grnd speed-KT	75	100	150	200	250	300
340' per NM	425	567	850	1133	1417	1700

SID	INITIAL CLIMB	ALTITUDE
AVENA THREE ALFA	Climb on runway heading to 1200', turn RIGHT and continue on TIJ R-103 to D13 TIJ, then turn RIGHT heading 126° to intercept TIJ R-110 to AVENA. Continue on the assigned route or in accordance with ATC instructions.	
BEKAL ONE ALFA	Climb on runway heading to 1200', turn RIGHT and continue on TIJ R-103 to D13 TIJ, then turn LEFT heading 082° to intercept TIJ R-097 to BEKAL. Continue on the assigned route or in accordance with ATC instructions.	
JOYAS THREE ALFA, TOPOS FOUR ALFA	Climb on runway heading to 1200', turn RIGHT and continue on TIJ R-103 to D10 TIJ, then turn RIGHT and proceed to join the TIJ 13 DME Arc to intercept the corresponding radial from TIJ to JOYAS or TOPOS. Continue on the assigned route or in accordance with ATC instructions.	
OASIS THREE ALFA	Climb on runway heading to 1200', turn RIGHT and continue on TIJ R-103 to D13 TIJ, then turn RIGHT heading 160° to intercept TIJ R-120 to OASIS. Continue on the assigned route or in accordance with ATC instructions.	
SEVRA TWO	Climb on runway heading to 1200', turn RIGHT and continue on TIJ R-103 to D7 TIJ, then turn LEFT and proceed to join the TIJ 13 DME Arc to intercept TIJ R-073 to SEVRA. Continue on the assigned route or in accordance with ATC instructions.	
TIJUANA TWO BRAVO	Climb on runway heading to 1200', turn RIGHT and continue on TIJ R-103 to D7 TIJ, then turn RIGHT within 10 NM to TIJ VOR. Depart TIJ VOR at the published MCA for the assigned route or in accordance with ATC instructions.	① MAINTAIN 6000' until TIJ 15 DME has been crossed

Apt Elev
487'

Trans level: FL195 Trans alt: 18500'

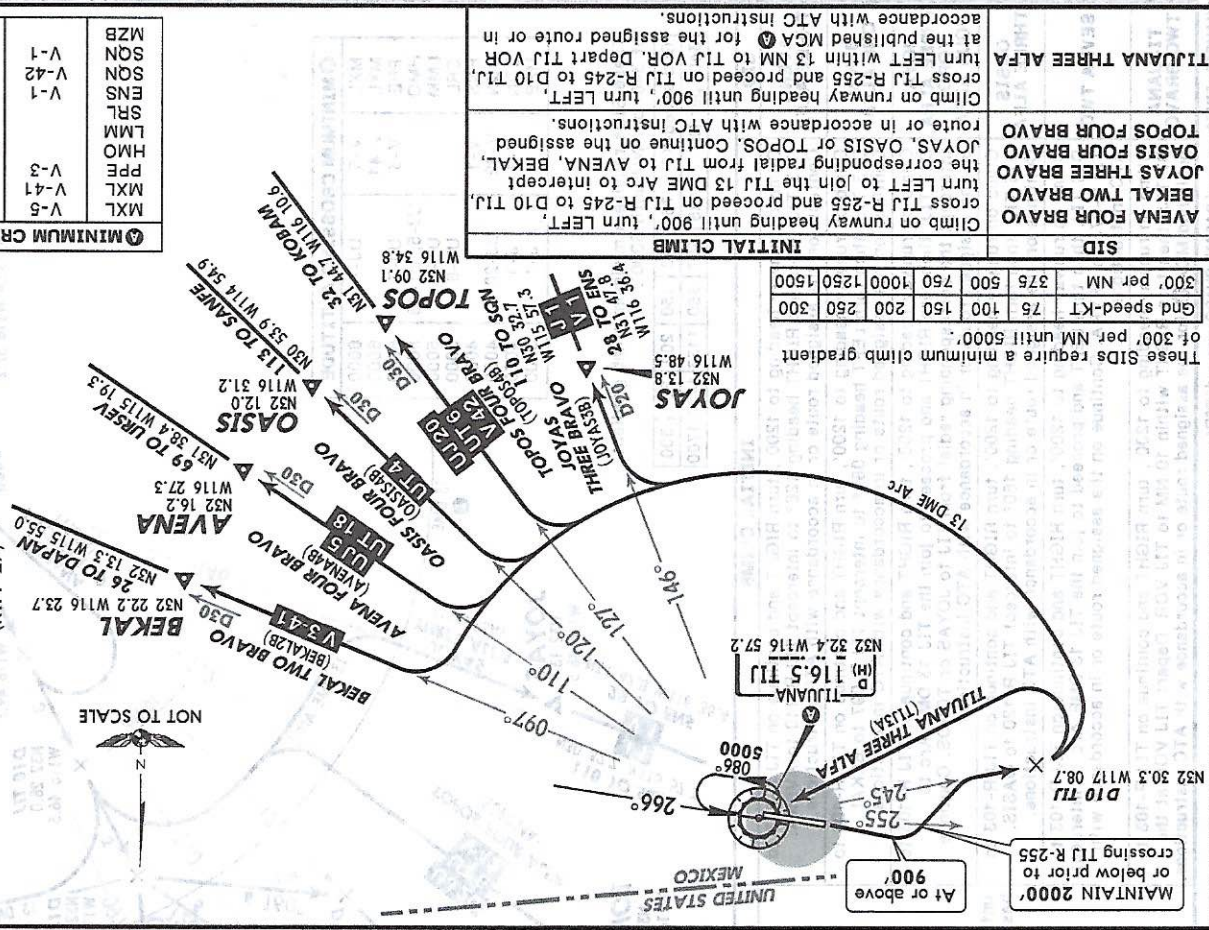
1. In case of failure of TIJ VOR/DME and/or radio aids involved in this procedure, EXPECT RADAR vectors.

2. CAUTION: Light, low altitude, uncontrolled, US VFR traffic patrolling NORTH side of the border.

④ MINIMUM CROSSING ALTITUDE		
MXL	V-5	8000
MXL	V-41	8000
PPE	V-3	8000
HMO	U-3	8000
LMM	U-4	8000
SRL	U-6	5000
ENS	U-1	4000
SGN	U-20	4000
MZB	U-1	3700

AVENA FOUR BRAVO (AVENA4B) [AVENA4B],
BEKAL TWO BRAVO (BEKAL2B) [BEKA2B],
JOYAS THREE BRAVO (JOYAS3B) [JOYA3B],
OASIS FOUR BRAVO (OASIS4B) [OAS14B],
TIJUANA THREE ALFA (TIJ3A) [TIJ3A],
TOPOS FOUR BRAVO (TOPOS4B) [TOPO4B]

DEPARTURES
(RWY 27)



These SIDs require a minimum climb gradient of 300' per NM until 5000'.

300' per NM	375	500	750	1000	1250	1500
Gnd speed-KT	75	100	150	200	250	300

SID

AVENA FOUR BRAVO
Climb on runway heading until 900', turn LEFT, cross TIJ R-255 and proceed on TIJ R-245 to D10 TIJ, turn LEFT to join the TIJ 13 DME Arc to intercept the corresponding radial from TIJ to AVENA, BEKAL, JOYAS, OASIS or TOPOS. Continue on the assigned route or in accordance with ATC instructions.

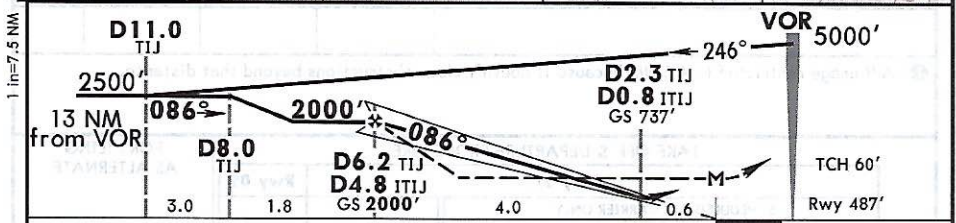
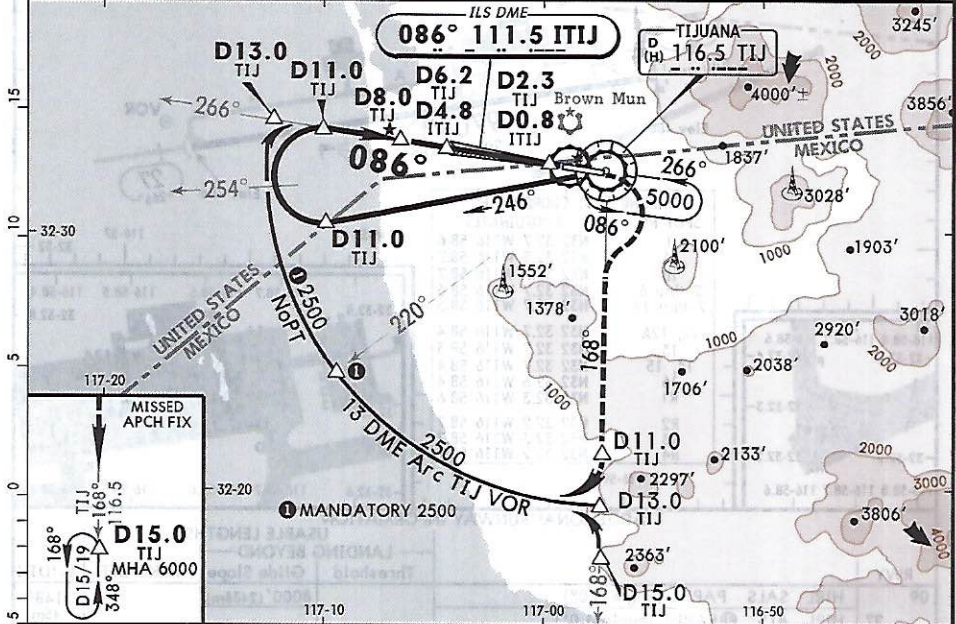
BEKAL TWO BRAVO
Climb on runway heading until 900', turn LEFT, cross TIJ R-255 and proceed on TIJ R-245 to D10 TIJ, turn LEFT within 13 NM to TIJ VOR. Depart TIJ VOR at the published MCA for the assigned route or in accordance with ATC instructions.

JOYAS THREE BRAVO
Climb on runway heading until 900', turn LEFT, cross TIJ R-255 and proceed on TIJ R-245 to D10 TIJ, turn LEFT within 13 NM to TIJ VOR. Depart TIJ VOR at the published MCA for the assigned route or in accordance with ATC instructions.

TOPOS FOUR BRAVO
Climb on runway heading until 900', turn LEFT, cross TIJ R-255 and proceed on TIJ R-245 to D10 TIJ, turn LEFT within 13 NM to TIJ VOR. Depart TIJ VOR at the published MCA for the assigned route or in accordance with ATC instructions.

TIJUANA THREE ALFA
Climb on runway heading until 900', turn LEFT, cross TIJ R-255 and proceed on TIJ R-245 to D10 TIJ, turn LEFT within 13 NM to TIJ VOR. Depart TIJ VOR at the published MCA for the assigned route or in accordance with ATC instructions.

*ATIS 127.9		*TIJUANA Approach (R) 119.5 120.3		*TIJUANA Tower 118.1
LOC ITIJ 111.5	Final Apch Crs 086°	GS D6.2 TIJ D4.8 ITIJ 2000'(1513')	ILS DA(H) (CONDITIONAL) 737'(250')	Apt Elev 487' Rwy 487'
MISSED APCH: Climb direct to 800', turn RIGHT and climb to intercept TIJ VOR R-168 outbound to D11.0 TIJ, turn RIGHT and join the 13 DME Arc or continue on TIJ VOR R-168 to hold at D15/19 TIJ, or according to ATC instructions.				
Alt Set: MB (IN on req) Rwy Elev: 18 MB Trans level: FL 195 Trans alt: 18500' 1. CAUTION: Do not use radio altimeter due to orographic conditions. 2. CAUTION: Light, low altitude, uncontrolled, US VFR traffic patrolling North side of the border. 3. CAUTION: Do not use both holding patterns at the same altitude simultaneously. 4. CAUTION: Before crossing the border A) Activate transponder code assigned by TIJ APCH B) Fly level at 2500' in turn.				

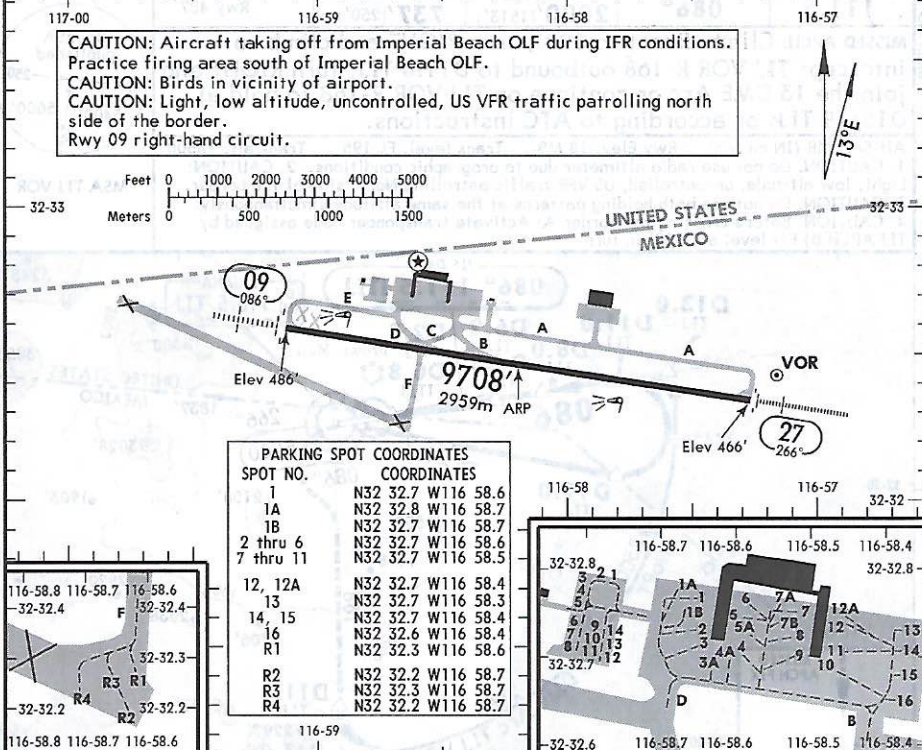


Gnd speed-Kts	70	90	100	120	140	160	SALS	800'	TIJ
GS	3.00°	372	478	531	637	743	PAPI	RT and ↑	116.5 R-168
FAF to MAP	4.6	3:57	3:04	2:46	2:18	1:43			
ILS STRAIGHT-IN LANDING RWY 09 DA(H) 737'(250') FULL ALS out					LOC (GS out) MDA(H) 840'(353') ALS out				
A							Max Kts	CIRCLE-TO-LAND	
B							90	Not Authorized	
C	1/2	3/4		3/4			120	North of Rwy 09-27	
D				1			140	MDA(H)	
ALL Non Skd	3/4	1		1 1/4			165	1180'(693') -1	
								1180'(693') -2	
								1180'(693') -2 1/4	

CHANGES: None.

© JEPPESEN, 2001, 2016. ALL RIGHTS RESERVED.

*ATIS 127.9	*TIJUANA Clearance 122.35	*Tower 118.1
----------------	------------------------------	-----------------



ADDITIONAL RUNWAY INFORMATION

RWY	USABLE LENGTHS			
	LANDING BEYOND		TAKE-OFF	WIDTH
	Threshold	Glide Slope		
09	HIRL SALS PAPI-L (angle 3.0°)		8000' (2438m)	148'
27	HIRL ALS PAPI-L (angle 3.0°)			45m

① PAPI usage restricted to 4.5 NM because it doesn't clear obstructions beyond that distance.

TAKE-OFF & DEPARTURE PROCEDURE			FOR FILING AS ALTERNATE		
Rwy 27		Rwy 09		Precision	Non-Precision
<p>SCHEDULED AIR CARRIER ONLY</p> <p>If meteorological conditions are below landing minimums an alternate is required before take-off. The pilot in command must report 14 longitudinal runway lights in the direction of take-off as a minimum for visibility of the high intensity runway lights. This system should be operative and the runway should have centerline markings. If there are differences between the reported values by the equipment and what the pilot reports, it will be taken as valid those counted by the pilot.</p>					
2 Eng	1/4	1 & 2 Eng	200-1/2	A	1600-2
3 & 4 Eng		3 & 4 Eng	1600-2	B	1600-3
				C	
				D	

For departure procedures and MCAs see SIDs.

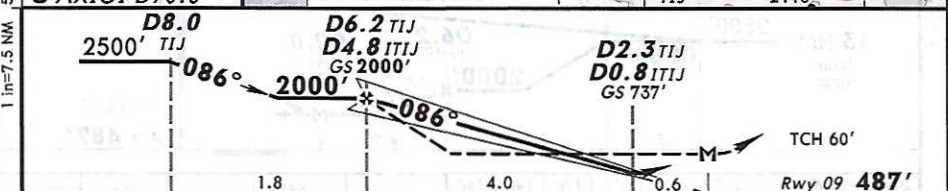
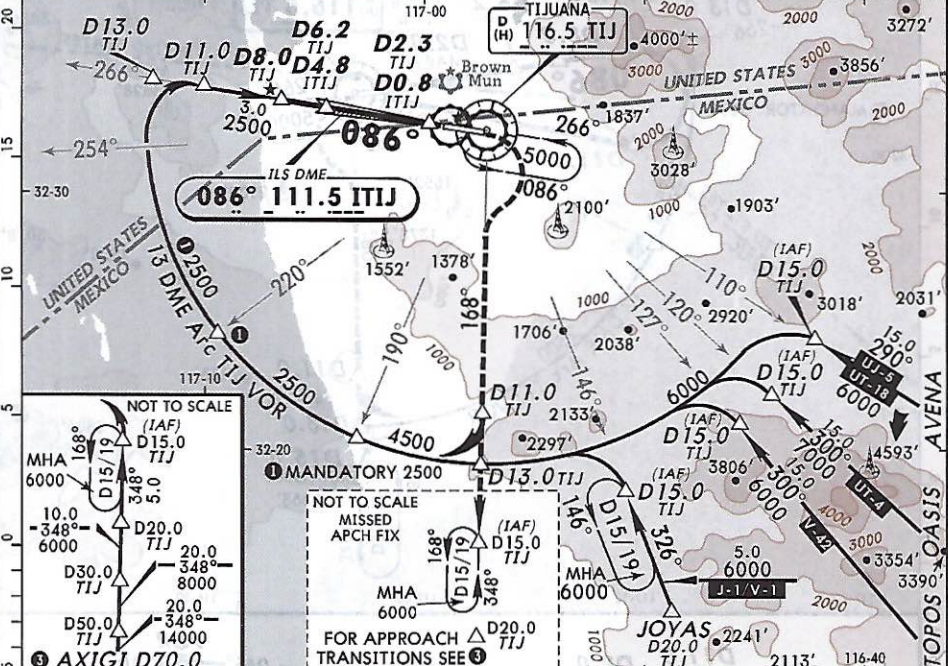
MMTJ/TIJ 24 OCT 14 **JEPPESEN** TIJUANA, MEXICO
 GEN ABELARDO L RODRIGUEZ INTL (11-2) ILS DME 2 or LOC Rwy 09

*ATIS 127.9		*TIJUANA Approach (R) 119.5 120.3		*TIJUANA Tower 118.1
LOC ITIJ 111.5	Final Apch Crs 086°	GS D6.2 TIJ D4.8 ITIJ 2000' (1513')	ILS DA(H) (CONDITIONAL) 737' (250')	Apt Elev 487' Rwy 09 487'

MISSED APCH: Climb direct to 800', turn RIGHT and climb to intercept TIJ VOR R-168 outbound to D11.0 TIJ, turn RIGHT and join the 13 DME Arc or continue on TIJ VOR R-168 to hold at D15/19 TIJ, or according to ATC instructions.

Alt Set: MB (IN on req) Rwy Elev: 18 MB Trans level: FL 195 Trans alt: 18500'

1. CAUTION: Do not use radio altimeter due to orographic conditions. 2. CAUTION: In case of TIJ DME failure at any point in this procedure, maintain the last altitude and proceed to the station in accordance with ATC instructions. 3. CAUTION: Light, low altitude, uncontrolled, US VFR traffic patrolling North side of the border. 4. CAUTION: Do not use both holding patterns at the same altitude simultaneously. 5. CAUTION: Before crossing the border A) Activate transponder code assigned by TIJ APCH B) Fly level at 2500' in turn.



Gnd speed-Kts	70	90	100	120	140	160	SALS	800'	RT and ↑	TIJ
GS	3.00°	372	478	531	637	743	PAPI	↑		116.5
FAF to MAP	4.6	3:57	3:04	2:46	2:18	1:43				R-168

STRAIGHT-IN LANDING RWY 09				CIRCLE-TO-LAND	
ILS		LOC (GS out)		Not Authorized North of Rwy 09-27	
DA(H) 737' (250')		MDA(H) 840' (353')		MDA(H)	
FULL	ALS out		ALS out	Max Kts	
A				90	1180' (693') - 1
B				120	
C	1/2	3/4	3/4	140	1180' (693') - 2
D			1	165	1180' (693') - 2 1/4
ALL Non Skd	DA(H) 787' (300')		1 1/4		
	3/4	1	1 1/2		

CHANGES: Caution note. © JEPPESEN, 2001, 2014. ALL RIGHTS RESERVED.

MMTJ/TIJ

GEN ABELARDO L RODRIGUEZ INTL

(13-1)

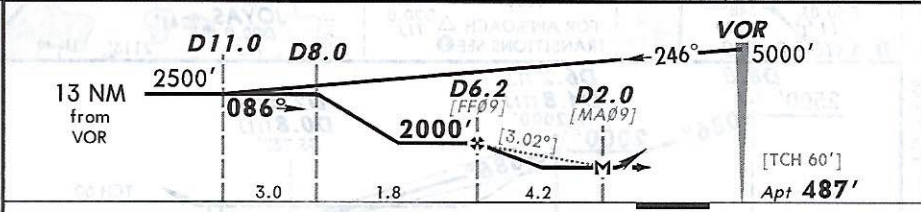
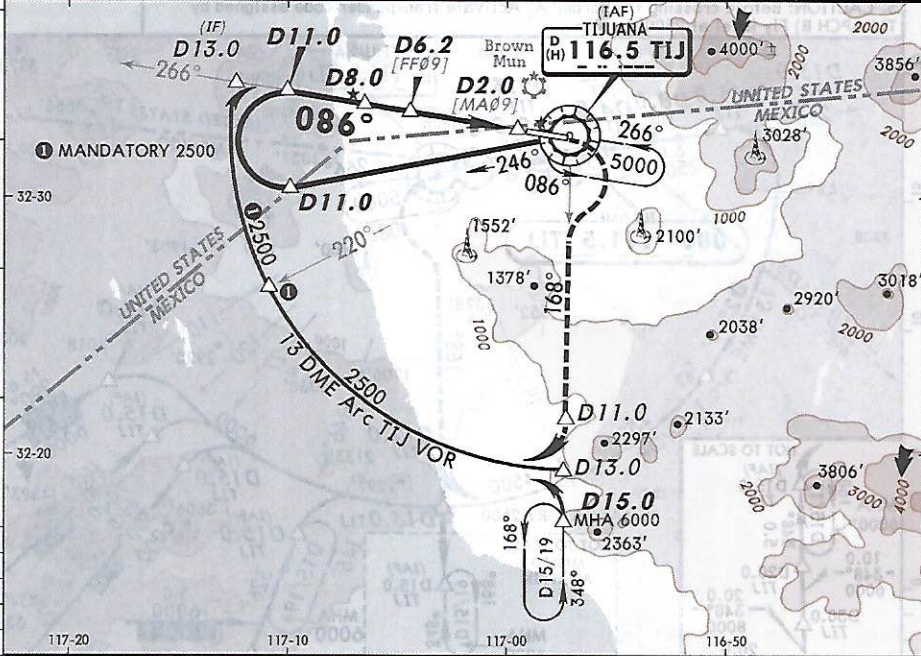
24 OCT 14

TIJUANA, MEXICO
VOR DME 1 Rwy 09

JEPPESSEN

BRIEFING STRIP™

*ATIS 127.9		*TIJUANA Approach (R) 119.5		*TIJUANA Tower 120.3	*TIJUANA Tower 118.1
VOR TIJ 116.5	Final Apch Crs 086°	Minimum Alt D6.2 2000' (1513')	MDA(H) 1120' (633')	Apt Elev 487'	
<p>MISSED APCH: Climbing RIGHT turn to intercept TIJ VOR R-168 outbound to D11.0, turn RIGHT and join the 13 DME Arc or continue on TIJ VOR R-168 to hold at D15/19, or according to ATC instructions.</p> <p>Alt Set: MB (IN on req) Apt Elev: 18 MB Trans level: FL 195 Trans alt: 18500'</p> <p>1. CAUTION: Do not use radio altimeter due to orographic conditions. 2. CAUTION: Light, low altitude, uncontrolled, US VFR traffic patrolling north side of border. 3. CAUTION: Before crossing the border A) Activate transponder code assigned by TIJ APCH B) Fly level at 2500' in turn. 4. CAUTION: Do not use both holding patterns at the same altitude simultaneously.</p>					



Gnd speed-Kts	70	90	100	120	140	160	SALS PAPI	TIJ 116.5 R-168	D11.0	
Descent Angle [3.02°]	374	481	534	641	748	855				
MAP at D2.0										

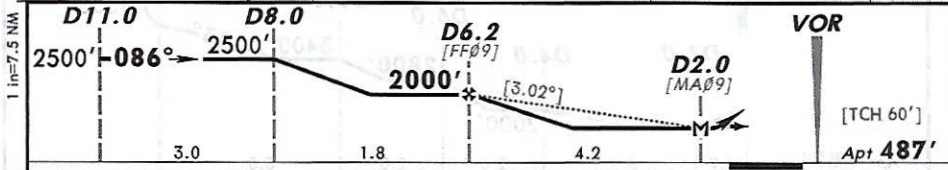
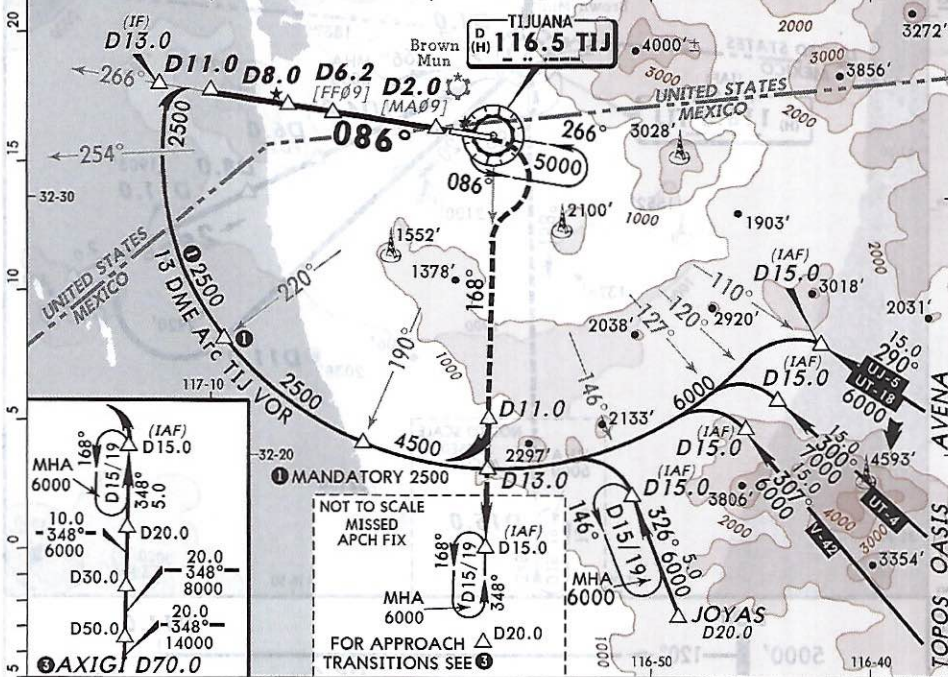
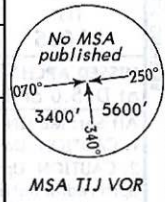
STRAIGHT-IN LANDING RWY 09				CIRCLE-TO-LAND			
MDA(H) 1120' (633')				Not Authorized North of Rwy 09-27			
ALS out				MDA(H)			
A				Max Kts			
B	1			90	1180' (693')-1		
C	1 3/4			120	1180' (693')-2		
D	2			140	1180' (693')-2 1/4		

CHANGES: None.

© JEPPESSEN, 2001, 2014. ALL RIGHTS RESERVED.

*ATIS 127.9		*TIJUANA Approach (R) 119.5 120.3		*TIJUANA Tower 118.1
VOR TIJ 116.5	Final Apch Crs 086°	Minimum Alt D6.2 2000'(1513')	MDA(H) 1120'(633')	Apt Elev 487'

BRIEFING STRIP™
 MISSED APCH: Climbing RIGHT turn to intercept TIJ VOR R-168 outbound to D11.0, turn RIGHT and join the 13 DME Arc or continue on TIJ VOR R-168 to hold at D15/19, according to ATC instructions.
 Alt Set: MB (IN on req) Apt Elev: 18 MB Trans level: FL 195 Trans alt: 18500'
 1. CAUTION: Do not use radio altimeter due to orographic conditions. 2. CAUTION: Light, low altitude, uncontrolled, US VFR traffic patrolling north side of the border. 3. CAUTION: In case of DME failure at any point in the procedure maintain last altitude and proceed to station in accordance with ATC instructions. 4. CAUTION: Before crossing the border: A) Activate transponder code assigned by TIJ APCH B) Fly level at 2500' in 13 DME Arc. 5. CAUTION: Do not use both holding patterns at the same altitude simultaneously.



Gnd speed-Kts	70	90	100	120	140	160	SALS	TIJ 116.5 R-168	D11.0
Descent Angle [3.02°]	374	481	534	641	748	855			
MAP at D2.0							PAPI	RT	

STRAIGHT-IN LANDING RWY 09				CIRCLE-TO-LAND	
MDA(H) 1120'(633')				Not Authorized North of Rwy 09-27	
		ALS out	Max Kts	MDA(H)	
A			90	1180'(693')-1	
B			120	1180'(693')-2	
C	1 3/4		140	1180'(693')-2	
D	2		165	1180'(693')-2 1/4	

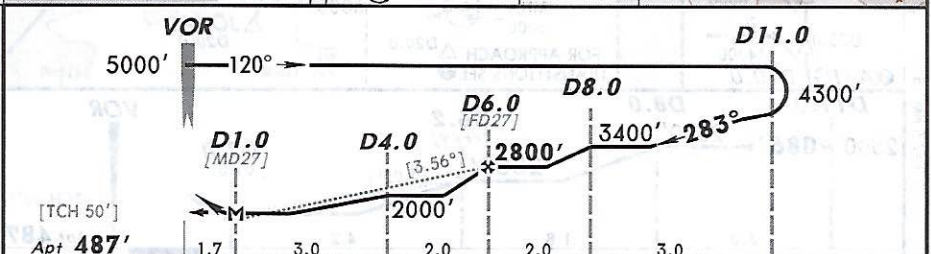
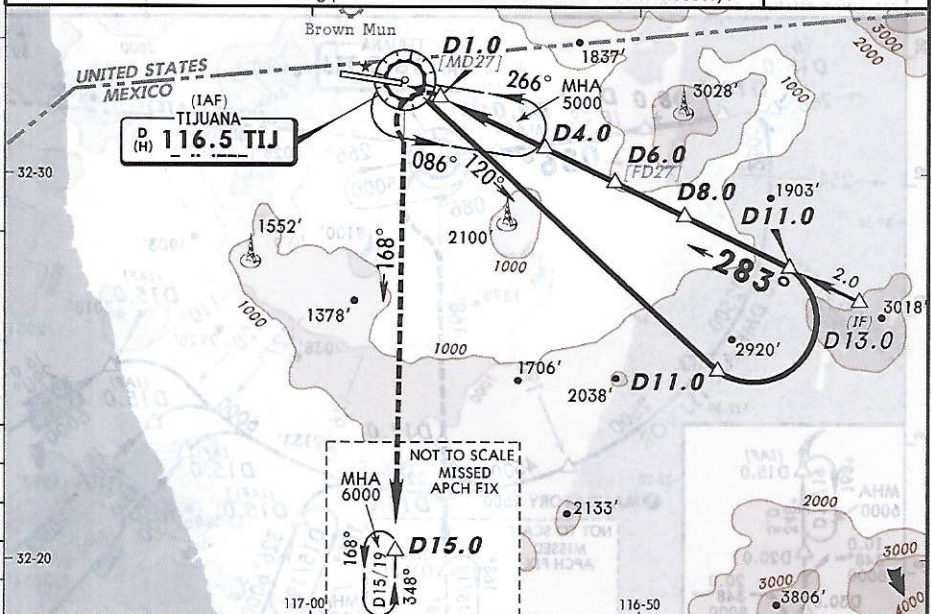
MMTJ/TIJ
GEN ABELARDO L RODRIGUEZ INTL **JEPPESEN** **TIJUANA, MEXICO**
13-3 **10 OCT 14** **VOR DME 1 Rwy 27**
Eff: 16 Oct

*ATIS 127.9		*TIJUANA Approach (R) 119.5 120.3		*TIJUANA Tower 118.1
VOR TIJ 116.5	Final Apch Crs 283°	Minimum Alt D6.0 2800' (2313')	MDA(H) 1000' (513')	Apt Elev 487'

MISSED APCH: Turn **LEFT** and climb outbound on TIJ VOR R-168 to hold at D15.0 or in accordance with ATC instructions.

Alt Set: MB (IN on req) Apt Elev: 18 MB Trans level: FL 195 Trans alt: 18500'

1. CAUTION: Do not use radio altimeter due to orographic conditions.
 2. CAUTION: Upon establishing visual contact with the Rwy, do not depart the final apch radial until D5.0. 3. CAUTION: Light, low altitude, uncontrolled, US VFR traffic patrolling north side of the border. 4. RESTRICTION: Max 160 KIAS on apch after D15.0.
 5. CAUTION: Do not use both holding patterns at the same altitudes simultaneously.



Gnd speed-Kts	70	90	100	120	140	160	
Descent angle	[3.56°]	441	567	630	756	882	1008

STRAIGHT-IN LANDING RWY 27			CIRCLE-TO-LAND Not Authorized North of Rwy 09-27		
MDA(H) 1000' (513')			ALS out		
A			Max Kts	MDA(H)	
B	1		90	1180' (693')-1	
C	1½		120	1180' (693')-2	
D	1¾		140	1180' (693')-2¼	

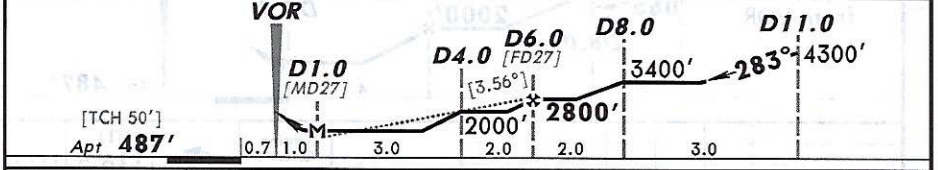
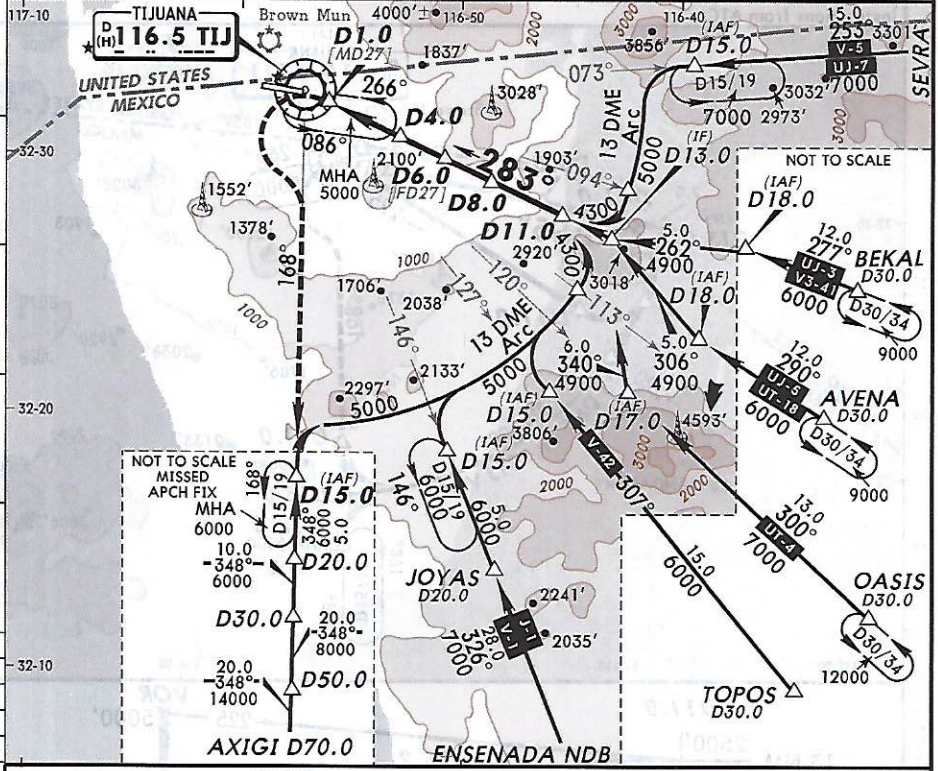
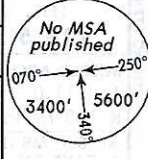
CHANGES: Procedure revised. © JEPPESEN, 2001, 2014. ALL RIGHTS RESERVED.

MMTJ/TIJ **JEPPESEN** **TIJUANA, MEXICO**
GEN ABELARDO L RODRIGUEZ INTL (13-4) 19 DEC 14 **VOR DME 2 Rwy 27**

*ATIS 127.9		*TIJUANA Approach (R) 119.5 120.3		*TIJUANA Tower 118.1
VOR TIJ 116.5	Final Apch Crs 283°	Minimum Alt D6.0 2800' (2313')	MDA(H) 1000' (513')	Apt Elev 487'

MISSED APCH: Turn LEFT to intercept TIJ VOR R-168 climbing to hold at D15.0, or in accordance with ATC instructions.

Alt Set: MB (IN on req) Apt Elev: 18 MB Trans level: FL 195 Trans alt: 18500'
 1. CAUTION: Do not use radio altimeter due to orographic conditions. 2. CAUTION: Upon establishing visual contact with the runway do not depart from the final approach radial until D5.0. 3. CAUTION: In case of failure of the TIJ DME at any point in the procedure maintain last altitude and proceed to the station in accordance with instructions from ATC. 4. CAUTION: Light, low alt, uncontrolled US VFR traffic patrolling North side of the border. 5. Max IAS 160 Kts (or minimum maneuvering) on approach after D15.0. 6. Do not use holdings simultaneously at the minimum holding altitude.



Gnd speed-Kts	70	90	100	120	140	160	ALS PAPI	TIJ on 116.5 R-168
Descent angle [3.56°]	441	567	630	756	882	1008		
MAP at D1.0								
STRAIGHT-IN LANDING RWY 27				CIRCLE-TO-LAND				
MDA(H) 1000' (513')				Not Authorized North of Rwy 09-27				
ALS out				MDA(H)				
A	1			Max Kts	1180' (693')-1			
B				90				
C	1 1/2			120	1180' (693')-2			
D	1 3/4			140	1180' (693')-2 1/4			
				165				

CHANGES: Waypoints and transitions. © JEPPESEN, 2001, 2014. ALL RIGHTS RESERVED.

MMTJ/TIJ

JEPPESEN

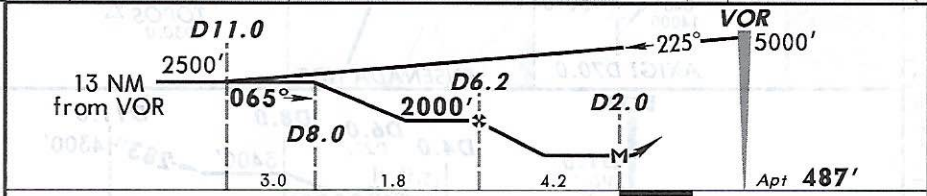
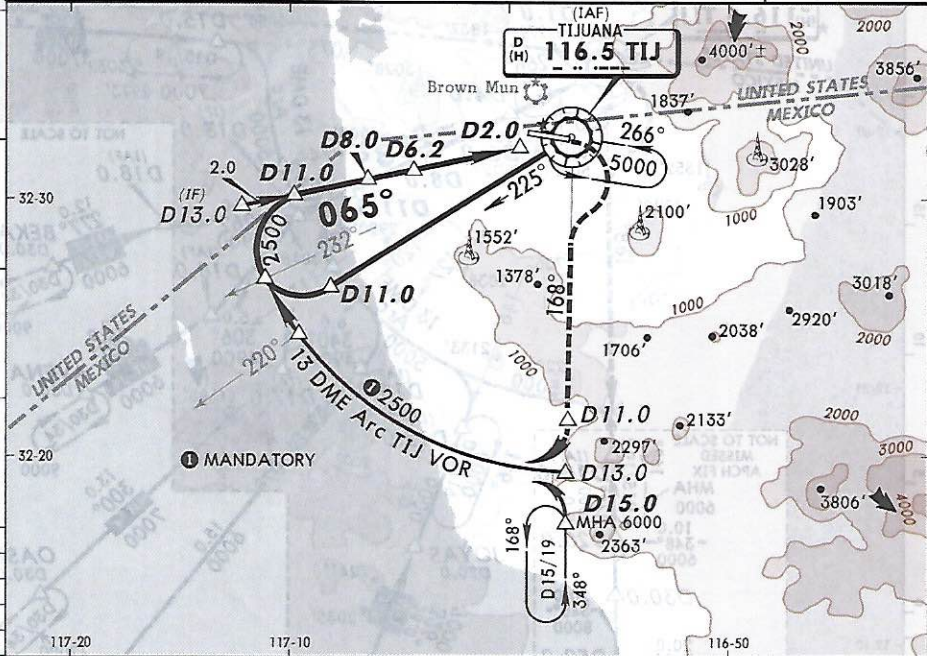
TIJUANA, MEXICO

GEN ABELARDO L RODRIGUEZ INTL (13-5) 19 DEC 14

VOR DME-A

BREFFING STRIP™

*ATIS 127.9		*TIJUANA Approach (R) 119.5 120.3		*TIJUANA Tower 118.1
VOR TIJ 116.5	Final Apch Crs 065°	Minimum Alt D6.2 2000' (1513')	MDA(H) Refer to Minimums	Apt Elev 487'
<p>MISSED APCH: Climbing RIGHT turn to intercept TIJ VOR R-168 outbound to D11.0, turn RIGHT and join the 13 DME Arc or continue on TIJ VOR R-168 to hold at D15.0, according to ATC instruction.</p> <p>Alt Set: MB (IN on req) Apt Elev: 18 MB Trans level: FL 195 Trans alt: 18500'</p> <p>1. CAUTION: Do not use radio altimeter due to orographic conditions. 2. CAUTION: Light, low altitude, uncontrolled, US VFR traffic patrolling north side of the border. 3. CAUTION: Do not use both holding patterns at the same altitudes simultaneously. 4. CAUTION: In case of failure of the TIJ DME at any point in the procedure maintain last altitude and proceed to the station in accordance with instructions from ATC.</p>				



MAP at D2.0				Lighting - Refer to Airport Chart	RT	TIJ 116.5 R-168	D11.0
				CIRCLE-TO-LAND Not Authorized North of Rwy 09-27			
				Max Kts	MDA(H)		
				A 90	1180' (693') - 1		
				B 120	1180' (693') - 2		
				C 140	1180' (693') - 2		
				D 165	1180' (693') - 2 1/4		

CHANGES: None.

© JEPPESEN, 2001, 2014. ALL RIGHTS RESERVED.