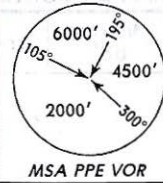
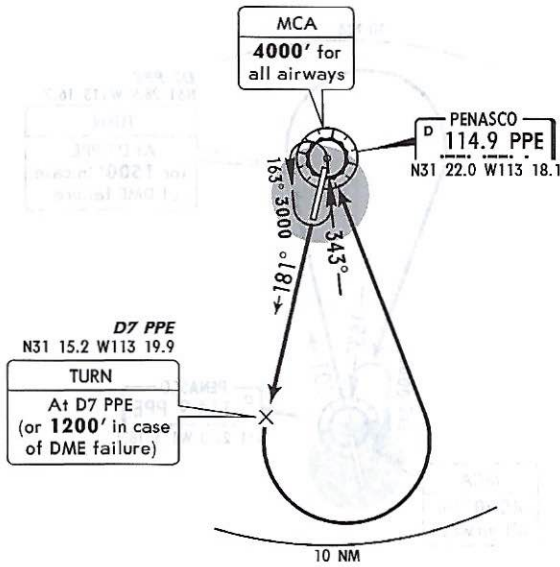


Apt Elev  
88'

Trans level: FL 195 Trans alt: 18500'



DEPARTURE RWY 18  
PENASCO ONE ALFA (PPE1A)



INITIAL CLIMB

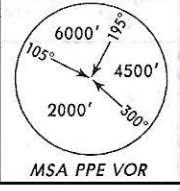
Climb via PPE R-181 to D7 PPE (or 1200' in case of DME failure), then turn LEFT within 10 NM to PPE. Cross PPE at the MCA for the assigned route or according to ATC instructions.

CHANGES: New procedure at this airport.

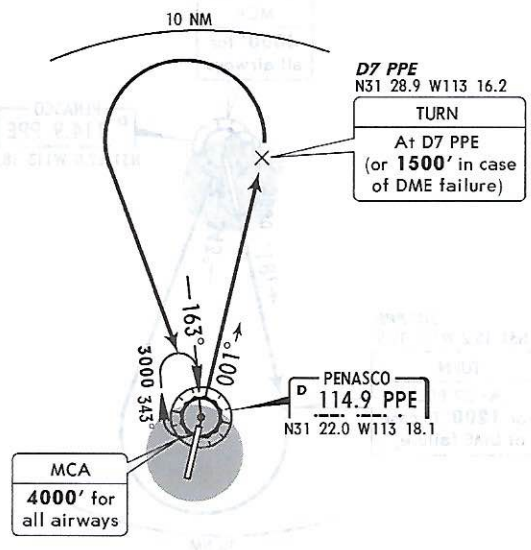
© JEPPESEN, 2010. ALL RIGHTS RESERVED.

32-1343

Apt Elev 88' Trans level: FL 195 Trans alt: 18500'



DEPARTURE RWY 36  
 PENASCO ONE BRAVO (PPE1B)

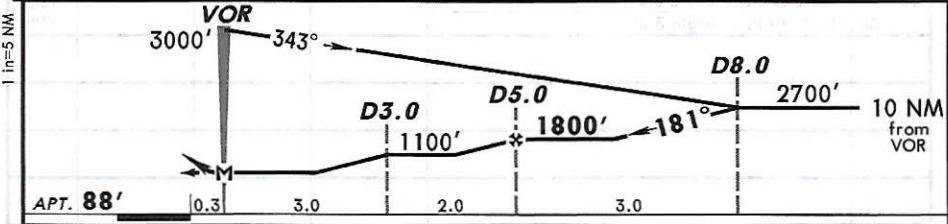
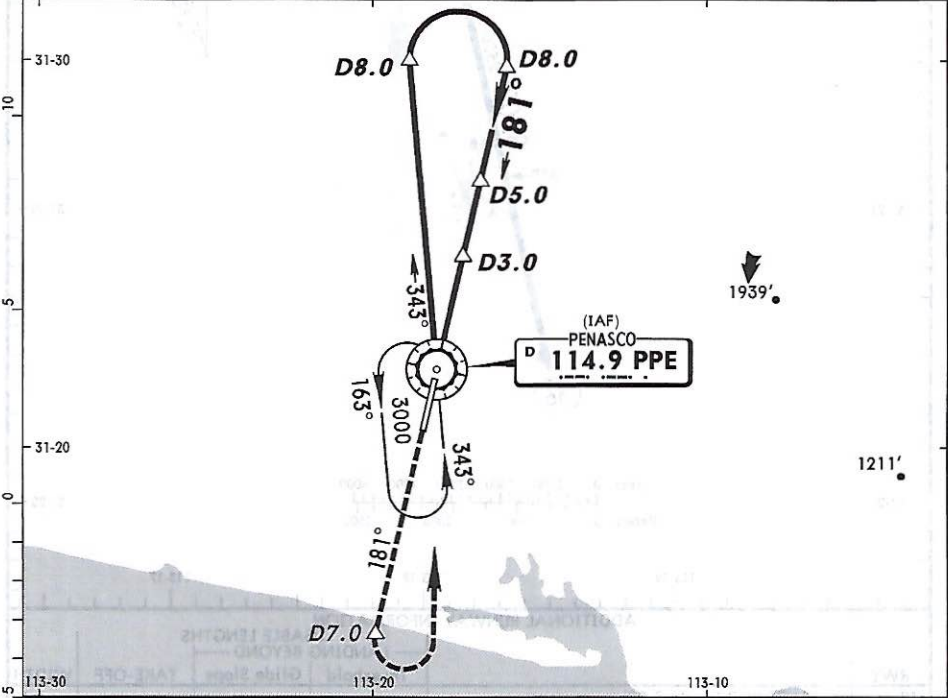
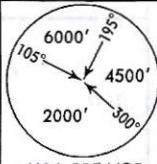


INITIAL CLIMB

Climb via PPE R-001 to D7 PPE (or 1500' in case of DME failure), then turn LEFT within 10 NM to PPE. Cross PPE at the MCA for the assigned route or according to ATC instructions.

CHANGES: New procedure at this airport. © JEPPESEN, 2010. ALL RIGHTS RESERVED.

*CORTES Radio <b>122.8</b>			*PENASCO Tower <b>118.85</b>		
VOR PPE <b>114.9</b>	Final Apch Crs <b>181°</b>	Minimum Alt D5.0 <b>1800' (1712')</b>	MDA(H) <b>520' (432')</b>	Apt Elev <b>88'</b>	
MISSED APCH: Climb outbound on PPE VOR R-181 to D7.0, then turn LEFT within 10 NM to PPE VOR to the minimum holding altitude.					
Alt Set: MB (IN on req)		Apt Elev: 3 MB	Trans level: FL 195	Trans alt: 18500'	
					MSA PPE VOR



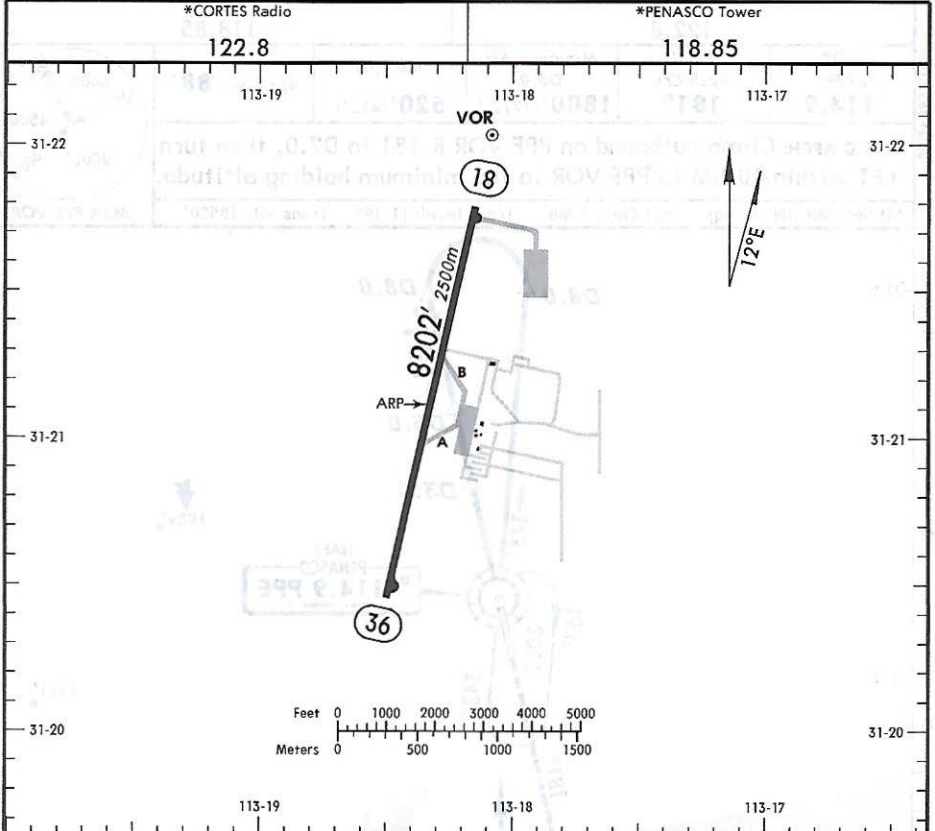
MAP at VOR				PAPI-R	PPE on <b>114.9 R-181</b>	<b>D7.0</b>
STRAIGHT-IN LANDING RWY 18				CIRCLE-TO-LAND		
MDA(H) <b>520' (432')</b>				MDA(H)		
A	1			Max Kts. 90	580' (492')-1	
B	1 1/4			120	600' (512')-1 1/2	
C	1 1/2			140	660' (572')-2	
D				165		

CHANGES: New procedure.

© JEPPESEN, 2010. ALL RIGHTS RESERVED.

32-1345

1 in=5 NM

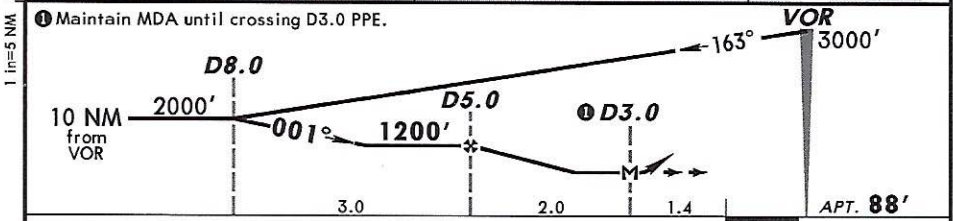
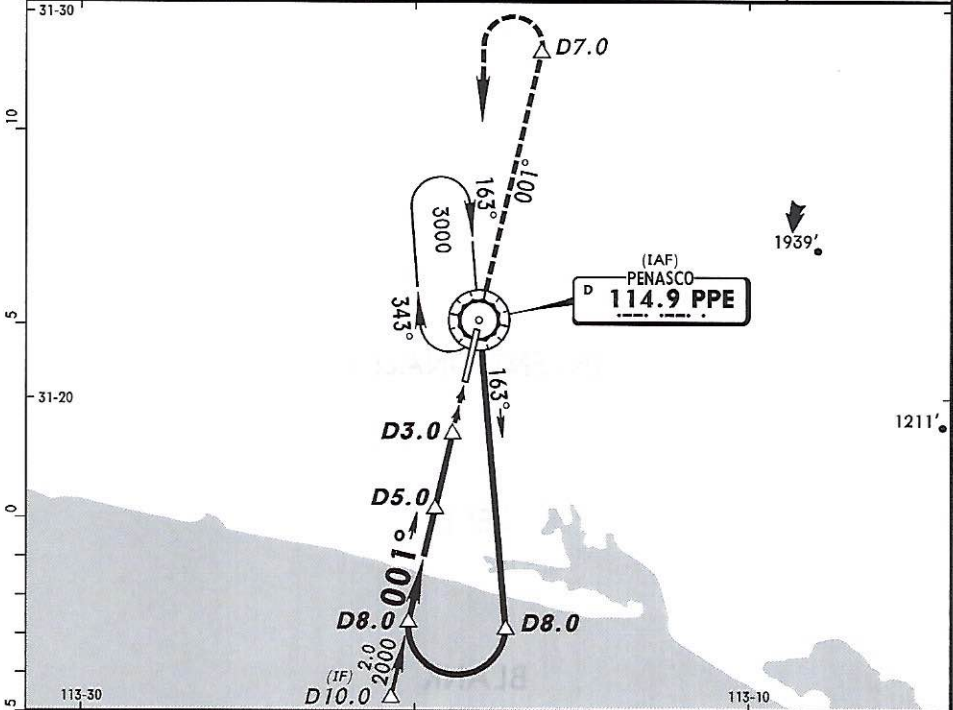


RWY	HIRL PAPI-R (angle 3.0°)	USABLE LENGTHS LANDING BEYOND		TAKE-OFF	WIDTH
		Threshold	Glide Slope		
18	HIRL PAPI-R (angle 3.0°)				148'
36	HIRL PAPI-L (angle 3.0°)				45m

	TAKE-OFF	FOR FILING AS ALTERNATE
	All Rwys	
1 & 2 Eng	300-1	NOT APPLICABLE
3 & 4 Eng	300-1/2	

**MMPE** **JEPPESEN** **PUERTO PENASCO, MEXICO**  
**MAR DE CORTES INTL** 28 MAY 10 **13-2** **Eff 3 Jun** **VOR DMÉ Rwy 36**

*CORTES Radio <b>122.8</b>			*PENASCO Tower <b>118.85</b>		
VOR PPE <b>114.9</b>	Final Apch Crs <b>001°</b>	Minimum Alt D5.0 <b>1200'</b> (1112')	MDA(H) <b>520'</b> (432')	Apt Elev <b>88'</b>	
<b>MISSED APCH:</b> Climb outbound on PPE VOR R-001 to D7.0, then turn <b>LEFT</b> within 10 NM to PPE VOR to the minimum holding altitude.					
Alt Set: MB (IN on req) Apt Elev: 3 MB Trans level: FL 195 Trans alt: 18500'					MSA PPE VOR



MAP at D3.0				PAPI-L	↑ on 114.9 R-001	PPE D7.0
-------------	--	--	--	--------	------------------	----------

STRAIGHT-IN LANDING RWY 36		CIRCLE-TO-LAND	
MDA(H) <b>520'</b> (432')		MDA(H)	
A	<b>1½</b>	Max Kts	
B		90	<b>580'</b> (492')-1
C		120	<b>600'</b> (512')-1½
D		140	<b>660'</b> (572')-2
		165	

CHANGES: New procedure. © JEPPESEN, 2010. ALL RIGHTS RESERVED.